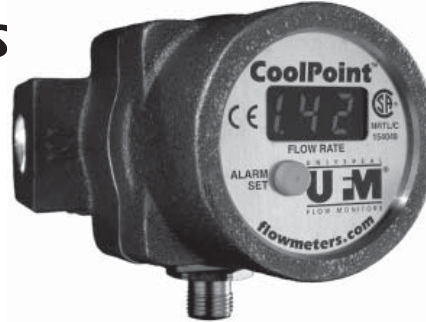


CoolPoint™

UNIVERSAL® Flow Monitors

Vortex Shedding Flowmeter for Water and Coolant



Coolpoint with Stationary Enclosure



Coolpoint with Rotatable Enclosure

Description

This flowmeter is made for water, water/glycol coolant or low viscosity fluids.

It has the following features:

- Flow transmitter 4-20 mA
- 316SS available in some sizes
- Optional temperature transmitter in some sizes
- Pulse output
- LED digital display
- User configurable alarm set points
- No moving parts to clog or wear
- Certified CSA and CE

Electrical Specifications

- Output 4-20 mA
- Alarm or Pulse Output SPST Solid State Relay (NC or NO, selectable)
 - 1/4" & 1/2" ≤185°F (85°C) -250 mA,
 - >185°F (85°C) -100 mA
 - 3/4" to 4" ≤185°F (85°C) -125 mA,
 - >185°F (85°C) -50 mA
- Input Power 10 - 30 VDC @ 80 mA
- Electrical Connection
 - Pin Connector (standard)
 - Pigtails (optional)
 - Junction Box with terminal strip (optional)

Material Specifications

Flow bodies of brass with PVDF (316SS bodies available in quarter and half inch sizes). Viton seals standard, Kalrez™ optional.

User-Configurable Options

Features that are selectable from a menu include:

- Engineering units (GPM, LPM, Fahrenheit or Celsius)
- Selectable alarm state
 - Closed below set point
 - Open below set point
- Set points or pulse out
- Flow direction
- Rotatable control box standard for all units except CP units for 12-gallons flow or less

Instrument Specifications

- Flow
 - Visual readout 3 digit, .3 inches high 3 numeral LED
 - Response time: 1.5 seconds to 63% of flow change
 - Alarm 5% FS deadband
 - Accuracy ±2% FS
 - Repeatability ±.25%
 - Turndown 10:1
- Temperature
 - Response time 1.8 seconds to 63% of change
 - Alarm ±2% deadband
 - Accuracy ±1% FS
 - Repeatability ±.25%
 - Readout 4 mA @32°F, 20mA @210°F
- Pressure
 - 300 PSIG (20 Bar) operating pressure (2" and lower)
 - 200 PSIG (13 Bar) operating pressure (3" & 4")
- General
 - Fluid temperature limits 35-210°F (2-99°C)
 - Enclosure rating IP 65, Type 1, 3, 4, 12 and 13
- Pipe Connections
 - NPT, BSPP & BSPT Female,
 - 3" & 4" ANSI 150# R.F. Flanges

How To Order Select the appropriate symbols to build a model code:

Example: CP12 is an 1 1/2 inch model for flow only with the standard options as shown below.

Example: CP12-T2F4 adds BSPT threads and a nonstandard flow rate of 50 GPM to the standard unit.

STANDARD CONSTRUCTION FOR BASIC PRODUCTS

FLOW ONLY	Model Code	Pipe Size Inches	Thread or Connection Type	Max Flow Rate GPM (LPM)	Body Material Output	Seal Material	Switch and Electronic	Connector or Conduit Box
	CP2	1/4	NPT	4 (15)	Brass	Viton	4-20 mA, one switch or pulse	Micro pin connector
	CP4	1/2	NPT	12 (45)	Brass	Viton	4-20 mA, one switch or pulse	Micro pin connector
	CP6	3/4	NPT	25 (95)	Brass	Viton	4-20 mA, one switch or pulse	Micro pin connector
	CP8	1	NPT	50 (190)	Brass	Viton	4-20 mA, one switch or pulse	Micro pin connector
	CP12	1 1/2	NPT	100 (380)	Brass	Viton	4-20 mA, one switch or pulse	Micro pin connector
	CP16	2	NPT	200 (750)	Brass	Viton	4-20 mA, one switch or pulse	Micro pin connector
	CP24	3	ANSI RF	300 (1136)	Brass	Viton	4-20 mA, one switch or pulse	Micro pin connector
	CP32	4	ANSI RF	600 (2271)	Brass	Viton	4-20 mA, one switch or pulse	Micro pin connector

FLOW AND TEMPERATURE

	Model Code	Pipe Size Inches	Thread or Connection Type	Max Flow Rate GPM (LPM)	Body Material Output	Seal Material	Switch and Electronic	Connector or Conduit Box
	CT6	3/4	NPT	25 (95)	Brass	Viton	Standard flow output plus 4-20 mA and set point for temp	Micro pin connector
	CT8	1	NPT	50 (190)	Brass	Viton	Standard flow output plus 4-20 mA and set point for temp	Micro pin connector
	CT12	1 1/2	NPT	100 (380)	Brass	Viton	Standard flow output plus 4-20 mA and set point for temp	Micro pin connector
	CT16	2	NPT	200 (750)	Brass	Viton	Standard flow output plus 4-20 mA and set point for temp	Micro pin connector
	CT24	3	ANSI RF	300 (1136)	Brass	Viton	Standard flow output plus 4-20 mA and set point for temp	Micro pin connector
	CT32	4	ANSI RF	600 (2271)	Brass	Viton	Standard flow output plus 4-20 mA and set point for temp	Micro pin connector

SPECIAL OPTIONS AVAILABLE

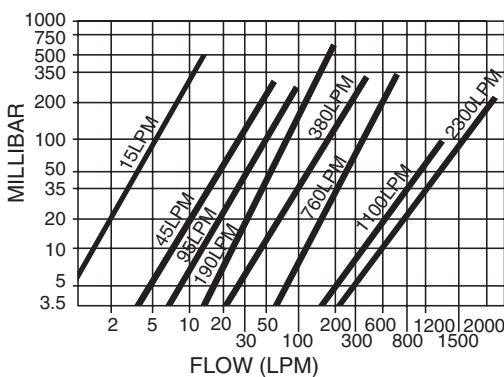
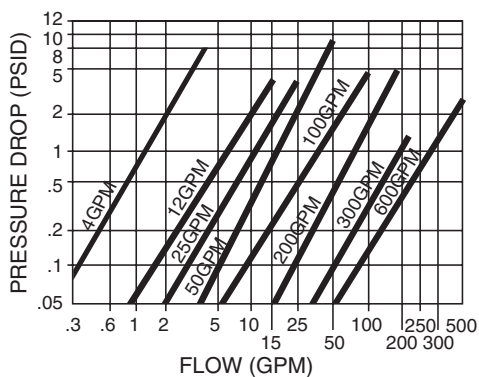
Thread type or connection type	Symbol	Flow rate GPM (LPM)	Symbol	Body material	Symbol	Seal material	Symbol	Switch and electronic options	Symbol	Connector or conduit box	Symbol
BSPT	T2	4 (15)	F1	316 SS	M2	Kalrez	S2	2 set points, no transmitter	E2	Pig tails	C2
BSPP	T3	12 (45)	F2					1 set point, pulse out	E3	Conduit box, terminal strip	C3
		25 (95)	F3								
		50 (190)	F4								
		100 (380)	F5								

SPECIAL OPTION AVAILABILITY BY PIPE SIZE AND UNIT TYPE

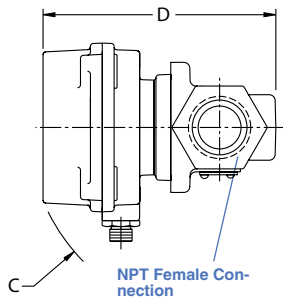
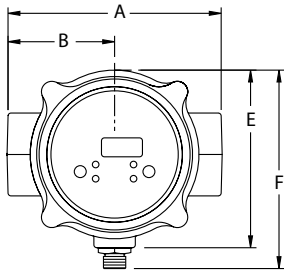
		Pipe size in inches									
	CP2	1/4	T2, T3			M2		S2		E2, E3	C2, C3
	CP4	1/2	T2, T3		F1	M2		S2		E2, E3	C2, C3
CT6	CP6	3/4	T2, T3		F2, F1*	M2 with F2 or F1 only		S2		E2, E3	C2, C3
CT8	CP8	1	T2, T3		F3			S2		E2, E3	C2, C3
CT12	CP12	1 1/2	T2, T3		F4			S2		E2, E3	C2, C3
CT16	CP16	2	T2, T3		F5			S2		E2, E3	C2, C3
CT24	CP24	3						S2		E2, E3	C2, C3
CT32	CP32	4						S2		E2, E3	C2, C3

*CP6-F2 or F1 has a non-rotatable box.

PRESSURE DROP CHARTS



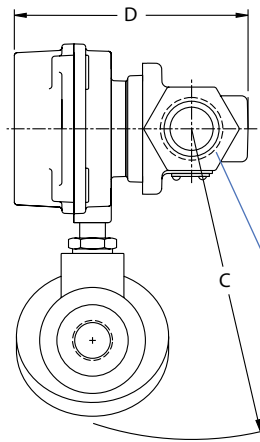
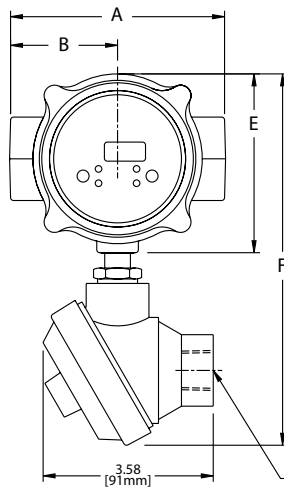
INSTALLATION DRAWING – BASIC METERS



Size	A	B	C	D	E	F
CP2, CP4, CP6-F1 & F2	3.25 [83mm]	1.62 [41mm]	3.13 [80mm]	4.07 [103mm]	2.29 [59mm]	2.73 [94mm]
CP6, CT6 CP8 & CT8	4.50 [113mm]	2.25 [57mm]	4.04 [103mm]	4.92 [125mm]	3.75 [95mm]	4.19 [113mm]
CP12,CT12 CT16 & CP16	6.75 [171mm]	3.37 [86mm]	4.71 [120mm]	6.14 [156mm]	3.75 [95mm]	4.19 [106mm]

NOTE: The following units do not have a rotatable enclosure:
CP2, CP4, CP6-F1 and CP6-F2

INSTALLATION DRAWING – METERS WITH OPTIONAL JUNCTION BOX

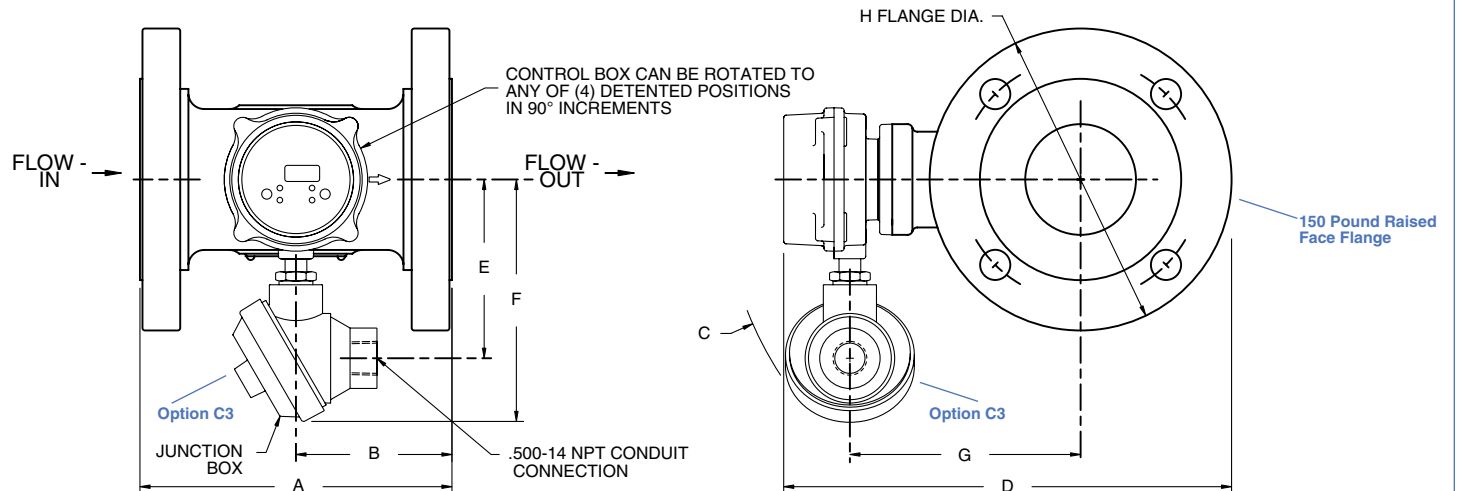


Size	A	B	C	D	E	F
CP2, CP4, CP6-F1 & F2	3.25 [83mm]	1.62 [41mm]	5.42 [138mm]	4.07 [103mm]	2.31 [59mm]	6.39 [162mm]
CP6, CT6, CP8 & CT8	4.50 [114mm]	2.25 [57mm]	6.52 [166mm]	4.92 [125mm]	3.75 [95mm]	7.79 [198mm]
CP12, CT 12 CT16 & CP16	6.75 [171mm]	3.37 [86mm]	6.87 [175mm]	6.14 [156mm]	3.75 [95mm]	7.79 [198mm]

NOTE: The following units do not have a rotatable enclosure:
CP2, CP4, CP6-F1 and CP6-F2

INSTALLATION DRAWING – 3" AND 4" PORT SIZE

Size	A	B	C	D	E	F	G	H
CP24 CT24	7.75 [197mm]	3.88 [99 mm]	8.90 [226 mm]	11.13 [283 mm]	4.44 [113 mm]	6.03 [153 mm]	5.73 [146 mm]	7.50 [191 mm]
CP32 CT32	10.75 [273 mm]	5.38 [137 mm]	9.46 [240 mm]	12.57 [319 mm]	4.44 [113 mm]	6.03 [153 mm]	6.43 [163 mm]	9 [229 mm]

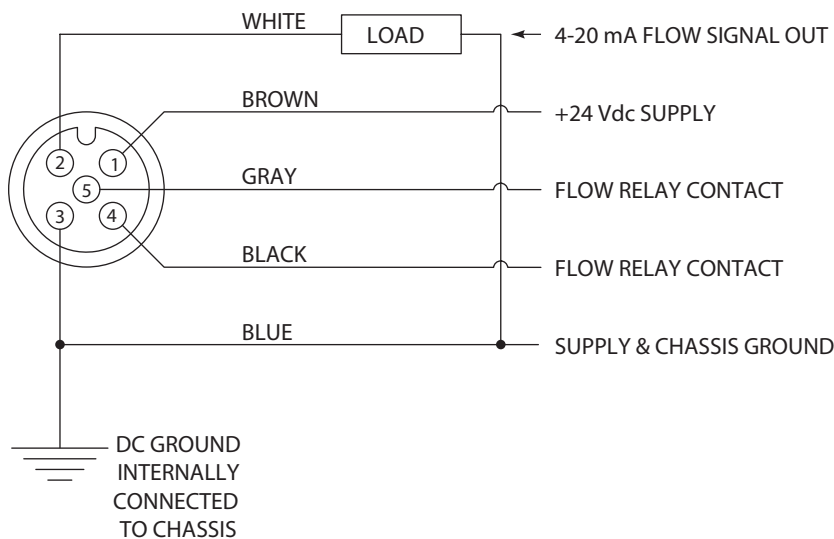


ACCESSORY CABLES AVAILABLE FOR PIN CONNECTOR METERS

Series	Description	Length in Meters	Part Number
CP	5 pin female	1	6241-1M
		3	6241-3M
		10	6241-10M
CT	8 pin female	2	6242-2M
		5	6242-5M
		10	6242-10M

PIN CONNECTOR PINOUTS

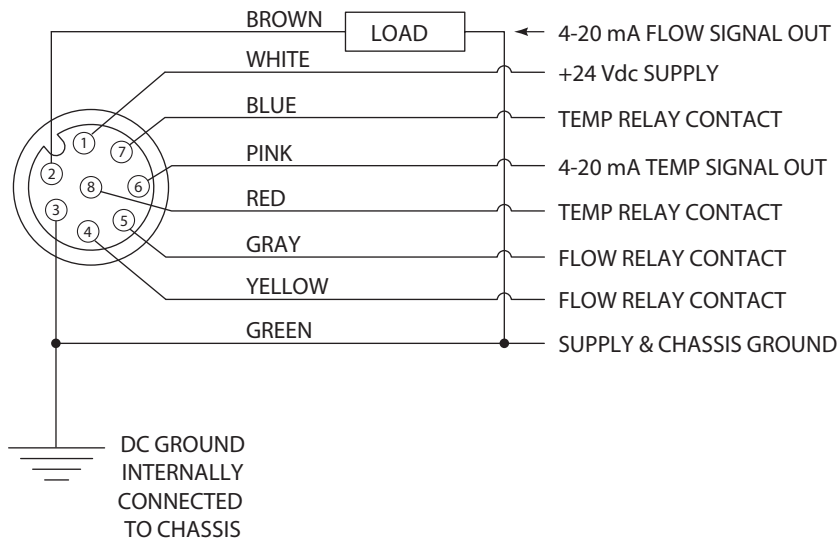
CP (FLOW ONLY)



PIN CONFIGURATION:

- 1: + 24 VDC power supply
- 2: 4-20 mA flow signal out
- 3: - 24 VDC power supply
- 4: flow relay contact
- 5: flow relay contact

CT (FLOW AND TEMPERATURE)



PIN CONFIGURATION:

- 1: + 24 VDC power supply
- 2: 4-20 mA flow signal out
- 3: - 24 VDC power supply
- 4: flow relay contact
- 5: flow relay contact
- 6: 4-20 mA temp signal out
- 7: temp relay contact
- 8: temp relay contact